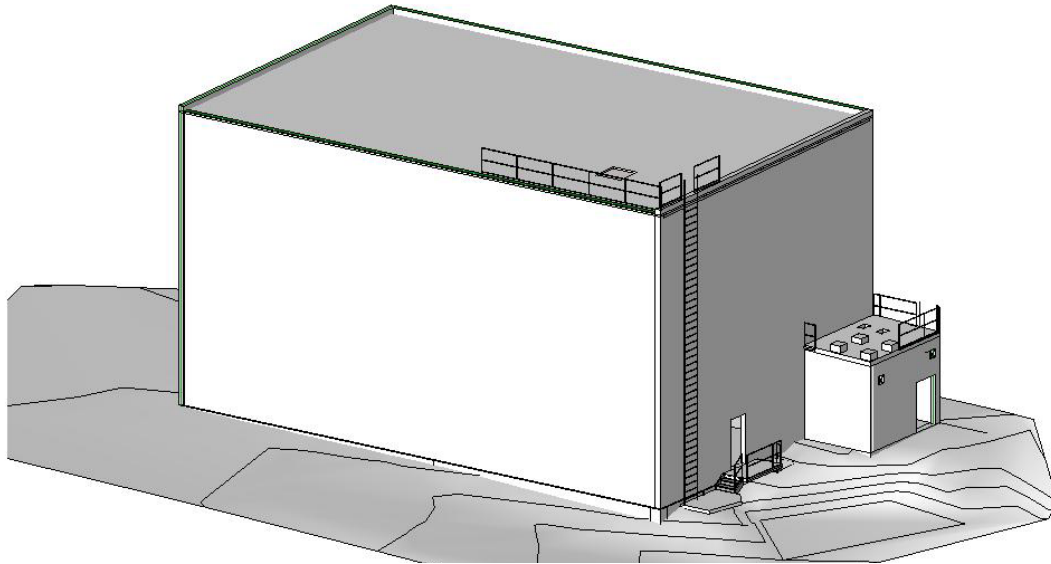


Hazardous Use Industrial Building

Linn County, Oregon



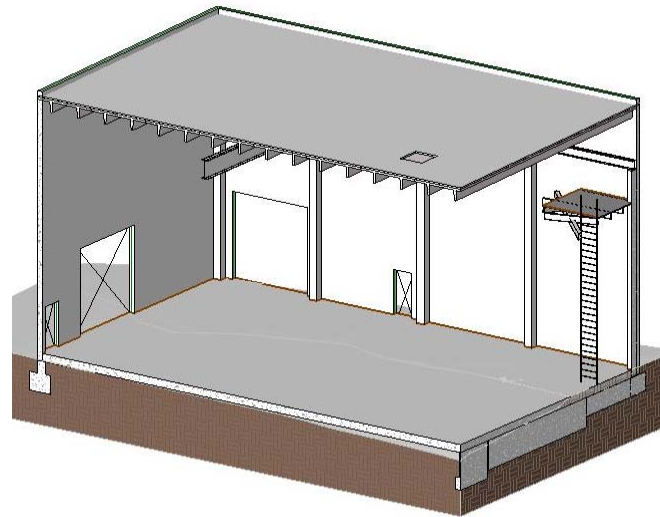
Square Footage:
4200

Project Construction Cost:
\$2.0 MM

Occupancy Classification:
H-3, use confidential

Client:
Confidential

Pillar's Responsibilities:
Building Layout & Design
Fire and Life Safety Code Review
Civil Engineering
Structural Engineering



FACILITIES

for more information contact John Evans at 541-752-9202 ext. 114



**PILLAR
CONSULTING
GROUP, INC.**

www.pillar-inc.com