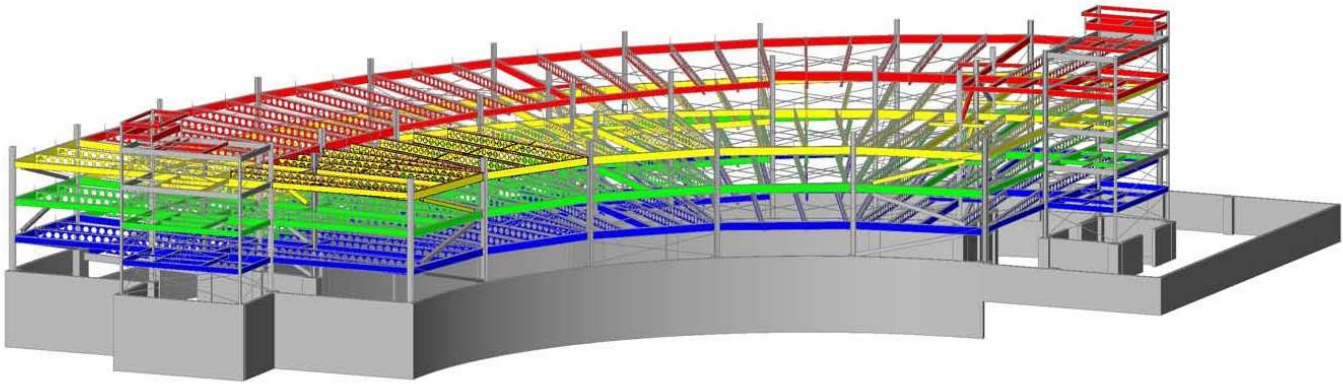


Providence Office Park II Parking Structure

Portland, OR

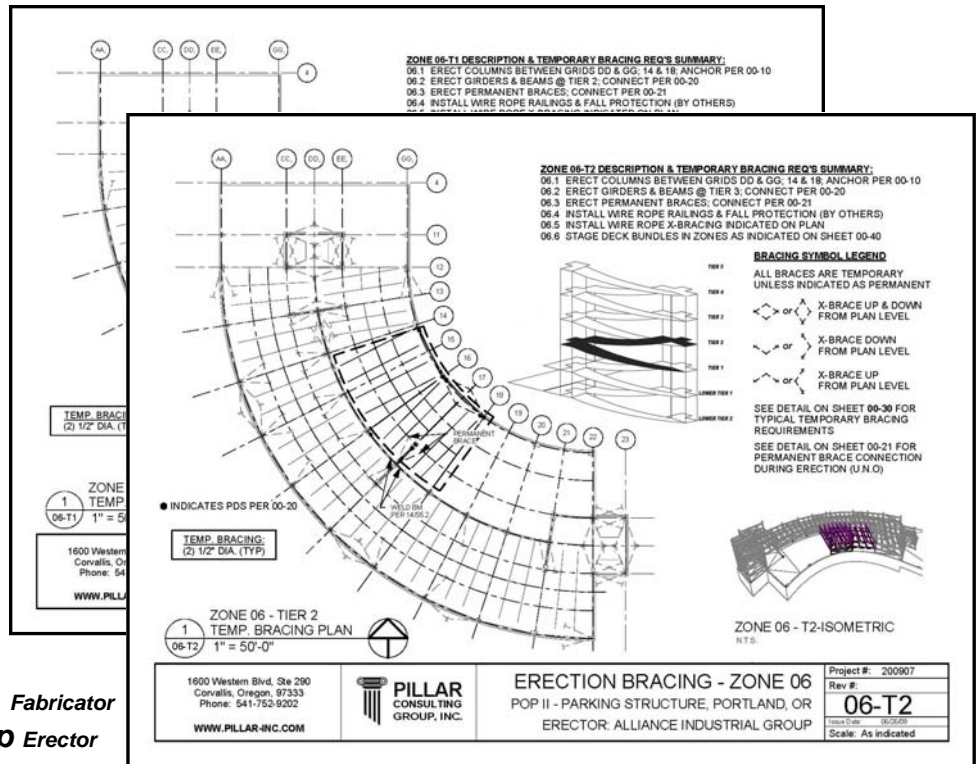


Square Footage:
34,000 SF Per Tier
4 Tiers Above Ground

Steel Structural System:
Castellated Beams
Braced Frames

Project Team:
Fought & Company, Inc. Fabricator
Alliance Industrial Group Erector

Pillar's Responsibilities:
Erection Bracing



STRUCTURAL

for more information contact John Evans at 541-752-9202 ext. 114



www.pillar-inc.com